



Constructing Excellence
Norfolk Club

Awards Presentation 2026

Celebrating the best of the
Norfolk Construction Industry



Welcome

Thank you for joining us this evening and a very warm welcome to the Norfolk Constructing Excellence Awards 2026.

This event remains a highlight of the club calendar and a wonderful opportunity to celebrate the talent, innovation, and collaboration across Norfolk's construction industry. The quality of this year's entries has once again been exceptional, reflecting the dedication and expertise behind the projects shaping our county.

Across all categories, we have seen an inspiring range of submissions, and we extend our sincere thanks to our judges for their time and careful consideration in reviewing them. We are also grateful to our sponsors, whose continued support is fundamental to the success of these awards.

We are delighted to be hosting this year's event at Royal Norwich, providing an excellent setting for an evening of celebration and networking.

This year, we are proud to support Nelson's Journey, and we encourage you to join us in raising awareness and funds for the vital work they do supporting bereaved children and young people across Norfolk.

Thank you for being part of this special evening, we hope you enjoy it.



Tim Boucher
Norfolk Constructing Excellence Chair
Director | Greyfriars Cost Management



Emily Purchase
Norfolk Constructing Excellence Vice Chair
Head of NGI Projects | John Innes Centre

Charity Message

Each year, Norfolk Constructing Excellence Club is proud to support a local charity that makes a meaningful difference within our community. For 2026, we are pleased to be supporting Nelson's Journey, a Norfolk-based charity dedicated to supporting children and young people who have experienced the death of a significant person in their life.

Grief can be an incredibly isolating and confusing experience for young people. Nelson's Journey provides vital support to help them understand and cope with their loss, offering a range of services including one-to-one sessions, therapeutic residential weekends, and a dedicated bereavement helpline. Their work ensures that no child in Norfolk has to face their grief alone.

Through compassionate guidance and tailored support, Nelson's Journey empowers children to build resilience, process their emotions, and move forward with hope. Their impact reaches hundreds of families each year, making a lasting difference at some of the most difficult times in young people's lives.

We are proud to support Nelson's Journey at this year's awards and encourage our guests, sponsors, and partners to join us in raising awareness and vital funds for this incredible cause.



Our Sponsors

We are extremely thankful to our sponsors for their generous support of this year's event.
Their contributions are what make it all possible.

LOVELL

 **SURVEY
SOLUTIONS**

 **birketts**
Next Level Law

 **PENTACO**
CONSTRUCTION LTD


ARCHITECTS

 **GOWING**

FOAN
CONSTRUCTION

 **NCL**
CONTRACTORS


VANTAGE
BUILDING CONTROL

 **harrisongroup**
ENVIRONMENTAL

Award Categories



For 2026, our award categories follow the National Constructing Excellence framework. The summaries below outline what judges were looking for in each category. By adopting the national submission format, we are helping to create a smoother pathway for our winners to progress from the local awards through to regional and national stages.

Please note, to streamline the number of awards presented on the night, we have combined two categories of similar nature under one sponsor.

Sustainability & Innovation

This award recognises projects or organisations within the construction industry that demonstrate both environmental responsibility and a culture of innovation. Applicants should show how they deliver positive—or reduce negative—impacts on the natural environment, embedding whole-life sustainability through high-quality design, effective procurement, and innovative tools and techniques. Equally, they should illustrate how they foster a systematic culture of innovation, using new or repurposed methods to solve problems, improve productivity, profitability, or sustainability, and deliver approaches that can be repeatedly applied within the organisation or across the sector.

People and Culture

“Our people are our greatest asset” - so attracting, motivating, supporting, developing and retaining the most diverse of human talent to our organisations and the sector is critical to ensure we totally understand and meet our customers’ and wider communities’ needs. Strong constructive cultures, effective leadership, health & wellbeing, and psychological safety at every level are vital to ensuring we positively challenge and continuously improve, as is Equality, Diversity & Inclusion and ensuring functional competence through progression pathways and continuing professional development.

Award Categories

Client of the Year

Construction clients have an important role to play in transforming the way the industry operates. How and when projects come to market significantly impacts the ability of the construction industry to provide innovative, whole life value-for-money solutions.

We are looking for a construction client that has been actively involved in delivering the construction programme and developed strategies for encouraging and rewarding excellence. It goes without saying we expect a culture of collaboration and transparency to be at the heart of how the client operates and empowers the wider team.

Residential Project of the Year

The Project of the Year category celebrates inspirational projects that deliver outstanding outcomes. We are looking for projects that exemplify the Constructing Excellence principles, which fully align with the collaborative work we are undertaking with the Construction Leadership Council. Projects must demonstrate the successful implementation of better ways of working and so help to provide a template for others to learn from.

G4C Future Leader

Generation 4 Change (G4C) is the young professional voice of the UK built environment industry and a driving force for change. The Future Leader Award celebrates the younger generation working within the construction sector and seeks to showcase the hard work and leadership of these up-and-coming professionals. The entries should ideally target those with less than ten years of experience in the industry (typically less than 30 years of age).

Delivering Value

Construction and the built environment play a huge role in underpinning our society and economy. To unlock better societal outcomes, we need to take an informed view of value and not simply make decisions based on cost.

Clients need to work with their stakeholders to consider how to unlock wider benefits throughout the construction project and the lifetime of the asset. Tools such as the Value Toolkit enable clients and design teams to take a more informed view of value across four capitals - Produced, Natural, Social and Human.

Whilst value can mean something different to everyone, what it shouldn't be is solely focused on cost. We are seeking projects that clearly demonstrate value-based decision making and the benefits it can bring.

Infrastructure & Public Realm

The Infrastructure Project of the Year category celebrates inspirational projects that deliver outstanding outcomes. We are looking for projects that exemplify the Constructing Excellence principles, which fully align with the collaborative work we are undertaking with the Construction Leadership Council. Projects should demonstrate the successful implementation of better ways of working and so help to provide a template for others to learn from.

Regeneration and Retrofit

The Regeneration and Refit Award aims to highlight projects or programmes that apply the Constructing Excellence principles to deliver better outcomes for an existing asset, which may include historic/heritage sites. These principles include procurement, innovation, collaboration, culture/people, productivity, client satisfaction, HS&W and digital. Applicants must demonstrate how they achieve improved outcomes against these principles.

Award Categories

Building Project of the Year

The Project of the Year category celebrates inspirational projects that deliver outstanding outcomes. We are looking for projects that exemplify the Constructing Excellence principles, which fully align with the collaborative work we are undertaking with the Construction Leadership Council. Projects should demonstrate the successful implementation of better ways of working and so help to provide a template for others to learn from.

The background of the advertisement is a collage of images related to construction and community. At the top right, the Pentaco logo is displayed in a white-outlined hexagon. The collage includes: a large group of people posing for a group photo; two construction workers in white hard hats and high-visibility vests looking at a large set of architectural blueprints; a construction site with a building under construction; a school building with children playing outside; and a group of construction workers in safety gear. The overall theme is professional collaboration and community impact.

PENTACO
CONSTRUCTION LTD

At Pentaco, our people are at the heart of our success. Built on a people-first approach, we deliver service excellence and consistently exceed expectations through strong collaboration and our commitment to Building better together. Our ambition is to be the natural contractor of choice. Not only by strengthening our supply chain, but by investing in our people and developing their talent.

By prioritising public sector work with schools, hospitals and councils, we offer our team both variety and long-term stability in their work. We are proud to build lasting partnerships, as we deliver meaningful projects and create an impact in the communities in which we care for.

Website : www.pentaco.co.uk Telephone : 01603 778950
LinkedIn : Pentaco Construction Ltd



Awards Entries

Sustainability & Innovation and Residential Project of the Year

Lovell Partnerships Ltd | Attleborough Road, Great Ellingham, Flagship Homes and Lovell Partnerships



Attleborough Road, Great Ellingham is a £17.3m affordable housing development delivered by Flagship Homes and Lovell Partnerships. Comprising 60 highly energy-efficient homes, it sets a regional benchmark for sustainable construction, modern methods of construction (MMC) and low-carbon delivery.

Designed for long-term performance and affordability, the scheme uses the iHouse aircrete panelised system, selected through early supply chain engagement for its carbon savings, precision, reduced waste and faster construction. Homes feature PV panels, air source heat pumps, efficient lighting, water-saving fixtures and high-performance fabric, achieving EPC B ratings.

Construction innovations included HVO-powered plant, low-energy EcoCabins and a circular waste strategy diverting 99.85% from landfill. Biodiversity is enhanced through ecological corridors, attenuation ponds and planting.

The project also delivered significant social value, including local spending, apprenticeships and community initiatives. It demonstrates how innovative design and construction can deliver sustainable, high-quality affordable housing with lasting impact.

CLIENT: Flagship Homes

ORGANISATIONS TO BE CREDITED: AECOM, Ingleton Wood, Rossi Long Consulting

LOVELL

Awards Entries

Sustainability & Innovation

Redhead Architects Ltd | The Prototype House



The Prototype House is a modest extension to a circa-1750 cottage in rural Norfolk, conceived as a full-scale material experiment to test whether a home can be built without structural concrete, cement or steel. The result is a small but ambitious example of low-carbon domestic construction.

Providing a new bedroom, bathroom and entrance, the extension sits discreetly behind the original cottage, preserving its prominence. Its simple form draws on local vernacular, with low eaves, a steep roof and carefully placed dormers reflecting Norfolk's rural typologies.

A materials-first approach shaped the design, prioritising environmental performance. Foundations use recycled foam-glass aggregate with limecrete, while the timber superstructure incorporates natural insulation, timber cladding and lime-based finishes to create a breathable, low-toxicity envelope.

Delivered for under £400,000, the project demonstrates that regenerative construction is achievable at a domestic scale, offering a practical model for future low-carbon housing.

CLIENT: James Mickelburgh

ORGANISATIONS TO BE CREDITED: Jensen Hunt Design,

Awards Entries

Sustainability & Innovation and Residential Project of the Year

Sponsored by:



FOAN
CONSTRUCTION

Saul D Humphrey LLP | Creake House



Creake House is a new dwelling of exceptional design, quality and craftsmanship, delivered collaboratively and seamlessly for a delighted Client. The home is surprisingly sustainable with a huge PV/solar array, ASHPs, water boreholes and a 500-year design life.

Consented for Planning under what used to be called Para 79 conditions (old Para 55). Paragraph 79 (now often replaced by Paragraph 80 or 84 in updated NPPF) is a National Planning Policy Framework policy in England that restricts new, isolated homes in the countryside but allows exceptions for outstanding or innovative design. It requires projects to be of exceptional quality, significantly enhance their setting, and be sensitive to the local area.

Creake House met this 'outstanding' requirement in all regards. The project was delivered beyond expectations and the finished result is truly exceptional.

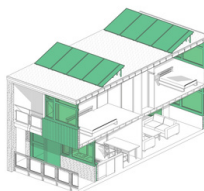
ORGANISATIONS TO BE CREDITED:

Norfolk Professional Building Services Ltd - D&B Main Contractor,
Rodney Black Design Associates, SWECO, Oxbury Chartered Surveyors, ALH

Awards Entries

Sustainability & Innovation

Matter of Fact Retrofit / Matter of Place Architects CIC | Mass Social Housing Archetype Retrofit Analysis: 4,500 Homes



Matter of Fact Retrofit (MoFR) is a Norwich-based architectural consultancy that has created a scalable, data-led approach to assessing and planning retrofit programmes for large social housing estates. Working with sister practice Matter of Place Architects CIC, MoFR combines architectural expertise with Passive House Planning Package (PHPP) modelling to produce rigorous, equitable and actionable retrofit strategies.

Since 2024, MoFR has been commissioned by Norwich City Council (NCC) to assess over 4,500 low-rise homes—around one third of its housing stock. The programme groups properties into archetypes and develops detailed PHPP energy models for each, testing retrofit options for energy reduction, carbon cost efficiency, overheating risk and whole-life carbon impact.

This work has already delivered savings: modelling showed External Wall Insulation (EWI), often assumed necessary, was not required for several archetypes, reducing costs and carbon. Designed for replication, the methodology and reports will be shared via the National Retrofit Hub archetype register.

CLIENT: Norwich City Council

ORGANISATIONS TO BE CREDITED: Matter of Fact Retrofit





Broadland Country Park Visitor Centre, Horsford



As a business that can trace its history in Norfolk back for over a century, we are proud of our heritage as a Norfolk based architectural practice.

Congratulations to all other Norfolk businesses who have been named finalists this evening on your outstanding achievements.

Together, we can continue to deliver the projects that will shape our region, and improve the lives of all those who live, visit and experience this fantastic county we call home.



The Hewett Academy, Norwich



East Coast College, Great Yarmouth



St Elizabeth Hospice, Gorleston-on-Sea



The Dyson Campus, Holt

Visit our website to see our portfolio or get in touch to find out more about us.

Telephone: 01603 660711
Email: mailbox@lsiarchitects.co.uk
Website: www.lsiarchitects.co.uk



Awards Entries

People & Culture

Construction East



Construction East is a charity created by construction professionals who care deeply about the future of the industry in Norfolk and Suffolk. The organisation was formed in response to a shared challenge: while demand for construction skills continues to grow, awareness of careers and education pathways has not kept pace. For many years, young people have had to leave the region to study, while employers have struggled to recruit skilled people.

Our approach is simple: construction professionals actively support education through lectures, mentoring, school engagement and helping shape college courses to reflect industry practice. Over the past year, we have expanded our activity, working with City College Norwich, supporting careers events such as Bright Futures Live, and engaging with hundreds of students across the region.

We have also recently formed a strategic partnership with the Construction Technical Excellence College (CTEC), helping to extend industry-supported learning across the Eastern region. Construction East exists to support skills, raise awareness and develop the professionals the region needs for the future.

Awards Entries

People & Culture

Bromford Flagship LiveWest



The project relates to the Values In Practice (VIP) initiative. Understanding that a workplace culture of continuous improvement is what leads to excellence, we implemented a wide-ranging set of changes to successfully reinforce our company values. As a result of this, we saw measurable increases in retention, attraction, engagement, recognition and inclusion.

VIP came about after recognising that we could do more to celebrate best practices, continuous improvement, innovation, and sustainable change management improvements. We saw less evidence of small-scale, constant improvement; or if it did happen, it was not recorded or shared. On top of that, we know that continuous improvement is important, and that if a business wishes to innovate, inspire and keep up with an ever-changing world it cannot stay still.

As such, we took a holistic approach that would lead to continuous improvement across the organisation. We established that success would be a marked reduction in our complaints, which would show that customers found us easy to work with and were happy with the services we provide.

In pursuit of this, we made sure to design systems from the customer perspective; an example of this is the ‘tenant hub’, which was the development of a single-source web portal that would easily allow tenants to access any and all services they needed from us in one place.

We also looked at the staff side of it, making changes to recruitment, leadership and encouraging employee empowerment to promote an open-minded approach to problem solving.

Awards Entries

People & Culture

Matter of Place Architects



Matter of Place Architects CIC (MOPA) is a purpose-led practice specialising in retrofit, heritage and community-focused design, placing people at the centre of everything we do.

Aligned with our CIC objectives, we have developed a structured, values-driven organisation with clear systems for recruitment, development and wellbeing, including transparent progression, protected development time, training support and enhanced staff benefits linked to climate and social outcomes.

Recognising our people as our greatest asset, we integrate people and business strategy, fostering continuous development, innovation and performance-led design. This creates a culture where learning, delivery and purpose are closely connected.

MOPA is an inclusive, supportive environment where people feel valued and able to grow, supported by flexible working and a culture of trust. Our investment in wellbeing and leadership has resulted in 100% staff retention, stronger collaboration and greater ownership of work.

MOPA demonstrates how even a small practice can take a strategic, values-led approach to people and culture, improving both staff experience and project outcomes.



Awards Entries

People & Culture

Pentaco Construction Ltd



Pentaco is built on a strong people-first approach, where employees choose to work with us because of our supportive environment and positive workplace culture. We promote an open and honest culture that encourages transparency, collaboration and trust across the business. By fully utilising the talent within our workforce and developing it further with training, we have created an environment where individuals can thrive while contributing to the success of the company.

Our values retain and attract skilled individuals to want to work for us, and we believe we recognise this with benefits such as customer satisfaction bonuses and major staff events such as trips abroad. We know our people are our greatest asset and we want to show our appreciation for everything they bring to Pentaco all year round. Within the business, we often talk about understanding “what good looks like.” For us, our people are what GREAT looks like.



Survey Solutions provides precision and engineering certainty across Norfolk and the UK. As a leading engineering surveying company, they deliver reliable geospatial data to support informed decision-making. With local expertise and a national network, they efficiently support projects of all sizes, from single developments to complex schemes.



IMPROVE PROJECT OUTCOMES WITH ACCURATE DATA...



We are proud to sponsor the Client of the Year award.

A huge congratulations to everyone who has been shortlisted, this recognition is a testament to your hard work, dedication, and outstanding achievements. To the winner, many congratulations on this well-deserved success.

Services

- Land Survey
- Measured Building Surveys
- Underground Surveys
- CCTV Drainage Surveys
- Drone & LiDAR Survey
- Site Engineering
- Rail
- Structural Monitoring
- NDV Monitoring

Contact...

 www.survey-solutions.co.uk

 info@survey-solutions.co.uk

 [info@survey-solutions.co.uk](tel:info@survey-solutions.co.uk)



Awards Entries

Client of the Year

Ingleton Wood | Broadland Housing Association



Broadland Housing Association is an exemplary regional housing provider with a portfolio of more than 5,000 homes across Norfolk and North Suffolk, delivering a wide range of tenures including sheltered, supported, and general needs housing. At the heart of their purpose is a long-term commitment to delivering high-quality, energy-efficient homes that support resilient, thriving communities.

Their leadership model is built on collaboration, fairness, and an unwavering commitment to quality homes. In their developments they consistently invest in early engagement, transparent communication, and long-standing partnerships with consultants and contractors, enabling teams to work openly, creatively and with shared purpose. This culture has underpinned more than 15 years of successful partnership working, resulting in a series of award-winning developments across the region, including their recent NEt Zero and Passivhaus-inspired schemes in North Norfolk.



Awards Entries

Client of the Year

Lovell Partnerships | Repton Property Developments



Lovell Partnerships and Repton Property Developments have established a long-term strategic client partnership built on openness, trust and shared goals. Together, they have delivered major housing developments across Norfolk, including Bowlers Green (Hopton-on-Sea) and St Edmund's Park (Acle), achieving strong outcomes through collaboration.

Their approach is defined by a true one-team ethos, early supply chain involvement, and a focus on long-term value rather than lowest-cost procurement. This has led to increased affordable housing, the integration of sustainable technologies such as PV panels, HVO fuel and EVCP ducting, and consistently high standards of design and construction.

The partnership has also delivered significant social value, including apprenticeships, educational engagement, community investment and strong local supply chain involvement. Through shared decision-making and aligned objectives, Lovell and Repton set a benchmark for collaborative client leadership.



FOAN

CONSTRUCTION



*Congratulations to all of
the fantastic nominees
and winners!*

Awards Entries

Residential Project of the Year

Holkham Estates Company/Built by Holkham | Hobbs Close - Built by Holkham



Holkham's vision is to be the UK's most pioneering and sustainable rural estate. A central part of this ambition is tackling the acute shortage of affordable and appropriately sized housing in North Norfolk - an area with one of the widest affordability gaps in the UK, driven by rising second-home ownership and short-term holiday lets.

Hobbs Close, a 23-home development on the edge of Wells-next-the-Sea, is Holkham's first project of scale in response to this challenge. Holkham created an innovative 'Policy Plus Plus' model, voluntarily reducing the proportion of homes sold on the open market to prioritise long term local rental. This widens the accessibility of affordable tenure, private rented and market sale - particularly for key workers, mid-income families, and young professionals priced out of ownership.

Emphasis was on build quality and tenure blind design. All homes are built using skilled local tradespeople, reinforcing economic benefit within the community. This project is relatively small but has a big social impact.

CLIENT: Holkham Estates Company/Built by Holkham

ORGANISATIONS TO BE CREDITED: Gleaves Associates, Feilden + Mawson, Armstrong Rigg, Jamie and Partners, Birketts, Sowerbys

Awards Entries

Residential Project of the Year

The Design Partnership (Ely) Ltd | 12 New Affordable Dwellings, Brancaster Staithe, Norfolk



Brentwood, Brancaster Staithe is a coastal redevelopment project for Freebridge Community Housing comprising of twelve new affordable dwellings for social rent to replace four former Housing Association homes. The site had been un-occupied for several years but was destroyed by a wildfire which spread through the coastal area. The Design Partnership designed a high quality, sustainable residential scheme within an Area of Outstanding Natural Beauty. The homes have been arranged with dwellings running along the street frontage in a linear fashion with a small cluster of cottages to the rear around a shared courtyard. Views were retained through the development of the village playing fields beyond. The project used natural materials seen locally to reflect the character of Brancaster Staithe. The Design Partnership also provided Quantity Surveying and Clerk of Works services. They used a JCT traditional contract with the new homes fully designed to ensure that the quality of build was not diminished through the development stage.

RobSon Construction were appointed as contractors due to their expertise in using traditional building techniques and a wealth of experience working around the holiday traffic running around the coast road. The scheme was successfully delivered to a high standard and provided much needed homes for the community.

CLIENT: Freebridge Community Housing

ORGANISATIONS TO BE CREDITED: The Design Partnership (Ely) Ltd, RobSon Construction, iM2, Rossi Long Consulting, Amplus





*Building the Future,
Restoring the Past*



Delivering new build and refurbishment projects across commercial, heritage, education, healthcare, industrial and residential sectors. We combine experienced site leadership with directly employed trades and external trades, maintaining control of good workmanship, programme and quality.

Congratulations to this year's finalists and winners!

Your work reflects the professionalism, leadership and high standards that drive our industry forward.

Tel: 01603 855 120 www.nclcontractors.co.uk

Awards Entries

G4C Future Leader



Kynleigh Parker

Kynleigh Parker of Lovell is an exceptional emerging leader whose resilience, rapid career progression and national recognition set her apart as a future leader in construction. In under six years, she has progressed from cleaning technician to assistant site manager, demonstrating determination, initiative and a clear passion for the built environment.

Her impact has been recognised at both regional and national level, including being named 'One to Watch' in the Construction Industry Training Board Top 100 Most Influential Women in Construction 2024, alongside multiple award wins celebrating her achievements and influence.

Alongside her professional success, Kynleigh has overcome significant personal health challenges while continuing to progress her career and complete a Level 4 qualification. A passionate advocate for inclusion, she actively supports and inspires others—particularly women entering construction—making her a highly deserving G4C Future Leader.

Awards Entries

G4C Future Leader



John Bugg

John is an exceptional professional whose leadership, initiative and commitment to improvement have already made a strong impact at Hainstone and within the wider construction industry. In the third year of his apprenticeship as an Assistant Quantity Surveyor, he has taken on responsibilities beyond his experience, playing a key role in projects such as Broadland Country Park and building strong client relationships.

He contributes to industry CPD events, is involved with the JCT Young Professionals Group and attended a Construction Industry Parliamentary Reception. John also organised a sponsored walk raising £8,320 for Hopstead and supports fellow apprentices, demonstrating his leadership, professionalism and commitment as a Future Leader.

His proactive approach, willingness to take on new challenges and ability to deliver value across projects highlight his potential to become a leading figure in the industry.

Awards Entries

G4C Future Leader



Will Gosling

Will is a standout candidate for the G4C Future Leader Award, consistently performing at the level of a structural engineer with five years' experience despite being in the third year of his degree apprenticeship. His technical abilities span the full project lifecycle, from early concept design through to detailed analysis and construction support on projects ranging from domestic works to large, multi-disciplinary developments. His dedication is evident, including responding to emergency structural incidents with minimal supervision.

Beyond his technical role, Will actively builds client relationships through industry networking events and has earned recognition through direct invitations from professional bodies. He is a natural communicator who represents both himself and his organisation with professionalism.

Will also demonstrates strong leadership, mentoring fellow apprentices and contributing to internal development and CPD. His drive for quality, innovation and continuous improvement marks him as a future leader in the industry.



WE BRING BUILDINGS TO LIFE

Since 1976

Gowing Building Services Ltd

We combine technical know-how with a customer-focused approach, ensuring every project is completed to the highest standards.

Gowing Carbon Reduction Solutions Ltd

We provide tailored strategies and technologies to improve energy efficiency, reduce emissions, and achieve sustainability goals.

Gowing Ventilation and Fabrication Ltd

We deliver high-quality, efficient solutions tailored to each project. Our focus is on durability, precision, and compliance with the latest industry standards.

Gowing Air Conditioning Ltd

We ensure spaces remain comfortable and energy-efficient all year round. Our skilled technicians are committed to delivering dependable systems and responsive customer care.



GOWING

gowinggroup.co.uk | 01353 666 669

Units 3&4 Greenham Park, Common Road, Witchford, Cambridgeshire, CB6 2HF

Awards Entries

Delivering Value

Greyfriars Project Management | Market Place Public Realm, Great Yarmouth



The Great Yarmouth Market Place Public Realm project is a £4.3 million scheme commissioned by Great Yarmouth Borough Council to improve one of the town's most important civic spaces. Long a focal point for trade and community life, the Market Place faced challenges including deteriorating paving, poor drainage, inconsistent lighting and limited accessibility. The project addresses these issues by creating a safer, more accessible and resilient environment that supports daily use while respecting its historic setting. Trader engagement was central to the design, with input shaping key decisions around access, layout and materials to ensure the space works effectively for those who rely on it.

Construction was carefully planned to keep the market fully operational, with no trading days lost and safe access maintained throughout. Strong commercial and safety management ensured value for money and effective risk control within a live public setting. The result is a durable, low-maintenance public realm that supports local businesses, improves everyday experience and strengthens a vital town-centre asset.

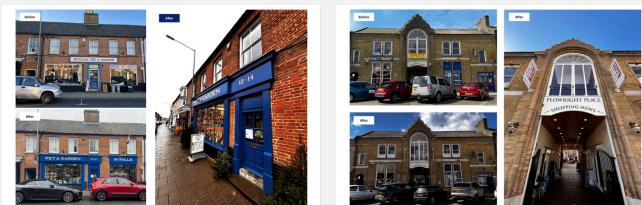
CLIENT: Great Yarmouth Borough Council

ORGANISATIONS TO BE CREDITED: Tarmac, Norfolk County Council, Daniel Connal Partnership, WSP

Awards Entries

Delivering Value

Kings & Dunne | Heritage-Led Regeneration of Swaffham Town Centre



The project delivered a series of conservation works across historic buildings in Swaffham through the High Street Heritage Action Zone (HSHAZ) and Partnership Schemes in Conservation Areas (PSiCA), aiming to revitalise the town through heritage-led regeneration.

Both schemes funded repairs, reinstated traditional features, and strengthened connections to local heritage. Kings & Dunne Architects worked with Breckland Council on over ten buildings, guiding owners through sensitive repairs and restoring shopfronts and architectural detailing to reinforce character and support long-term sustainability.

The programme involved owners, tenants, Breckland Council, Historic England and the community, each with differing priorities. Kings & Dunne aligned these through clear communication and collaboration.

Success depended on ongoing owner engagement beyond individual projects. A structured, trust-based approach ensured lasting value. The wider aim is to preserve Swaffham's distinct character while strengthening its social and economic vitality, with completed projects informing Breckland's Shop Front Design Guide.

CLIENT: Breckland Council

ORGANISATIONS TO BE CREDITED: Greystone & Mason Ltd, NCL Contractors Ltd, Cliveden Conservation, GF Atthowe

Awards Entries

Delivering Value

LSI Architects | Norfolk Community Diagnostics Centres



The Norfolk and Waveney CDC programme is the region's largest capital healthcare investment in 20 years, part of a national initiative delivering over 170 Community Diagnostic Centres across England.

These facilities expand outpatient diagnostic capacity, offering MRI, CT, X-ray and ultrasound imaging to support faster diagnosis and improved health outcomes. Increased capacity has reduced waiting times, enabling patients to access care sooner and closer to home through efficient, clinically led pathways.

LSI Architects designed two centres for the James Paget University Hospital and The Queen Elizabeth Hospital King's Lynn, each providing up to 40,000 outpatient appointments annually. By relocating diagnostics outside main hospital buildings, clinical teams can focus on complex cases.

Both two storey buildings house diagnostic services at ground level with plant above, designed to sit sensitively in their surroundings. Achieving Net Zero Carbon in Operation and BREEAM Excellent, they use all-electric systems, solar PV and modern construction methods, delivering high-quality, sustainable healthcare within tight constraints.

PROJECT TEAM: NHS Norfolk and Waveney Integrated Care System

ORGANISATIONS TO BE CREDITED: R G Carter, Lexica,
Rossi Long Consulting

Awards Entries

Delivering Value & Building Project of the Year

Sponsored by:



LSI Architects | City College Norwich Construction Skills Hub



The £4.4M Construction Skills Hub at City College Norwich addresses growing demand for T-Level construction courses and the industry's widening skills gap. The college delivers 84% of construction training for 16–19 year olds in Greater Norwich and is the county's primary provider of practical skills. The Hub supports training in high-demand trades such as plumbing and electrical, responding to forecasts of nearly 4,000 additional workers needed annually.

The building mediates between contemporary campus architecture and historic workshops through a simple, robust material palette, combining a masonry base with metal cladding above. Carefully detailed façades and proportioned windows create a strong architectural identity.

Internally, two large workshops per floor provide dedicated training spaces, supported by technician areas, storage, and practical work bays.

Designed with sustainability in mind, the building incorporates solar panels, air source heat pumps, high-performance glazing and efficient insulation. The project also delivered strong social value through student engagement, including lectures and live site visits, supporting future careers in construction.

CLIENT: City College Norwich

ORGANISATIONS TO BE CREDITED: MJS Projects, Clancy Consulting, REAL Consulting, ALH Building Design Services, Norwich Electrical Co. Ltd, PJ Plumbing, Mitre Carpentry, East Anglian Brickwork, iM2 Ltd

Awards Entries

Delivering Value

Sponsored by:



NCL Contractors | Easton College - Multi Space Refurbishment



The Easton College Multi-Space Refurbishment delivered a fast-track upgrade of teaching, fitness and communal facilities within the main building. Completed by NCL Contractors in just 10 weeks, the £1.07m project refurbished 16 spaces, including classrooms, a sports performance lab, dance studio, gym, reception, refectory and support areas. It supports the consolidation of sports provision within the Sports Centre, enhancing both learning and recreational use.

Delivered on a live campus, the project required careful phasing to minimise disruption while maintaining safe operations. Easton College, part of Norfolk Academies, serves around 10,000 students annually, making high-quality facilities essential to education and wellbeing.

Works included full internal strip-out, new finishes, and upgraded mechanical and electrical systems. Reconfiguration optimised the existing footprint, improving functionality and circulation.

The result is a series of modern, durable spaces supporting the college's ambitions as a regional Centre of Excellence for Sport, while providing long-term value through improved learning environments and expanded community use.

CLIENT: Easton College

ORGANISATIONS TO BE CREDITED: REAL Consulting, LSI Architects, Canham Consulting, Clear Consulting and Design

Awards Entries

Delivering Value

NCL Contractors | Robert Kett Primary School - Refurbishment



The refurbishment of Robert Kett Primary School shows how a modest investment can deliver wide-ranging value. Delivered by NCL Contractors, the project upgraded 407m² of teaching and support space, including the food technology classroom, library, lobby and day care annexe, creating modern, practical environments that enhance learning and wellbeing.

Working within a live school, the team prioritised efficient delivery and minimal disruption, collaborating closely with Unity Schools Partnership and PCH Associates to ensure a coordinated and cost-effective scheme.

The improved library now offers an engaging reading space with bespoke murals, while the food technology classroom supports hands-on learning and life skills. Strong cost management saw the project delivered under budget (£253k vs £300k), enabling additional works including a covered walkway, storage and electrical upgrades.

Wider social value included planting, fundraising support and community engagement. Completed in 8 weeks, the project benefits 600 pupils and demonstrates lasting value beyond the original brief.

CLIENT: Unity Schools Partnership

ORGANISATIONS TO BE CREDITED: PCH Associates, Norwich Electrical, PJ Plumbing, R Hill Decorations

Awards Entries

Delivering Value

Norse Consulting - NPS Property Consultants PCL | Fred Nicholson School



This project delivered a new-build Special Educational Needs (SEN) school to replace an outdated facility in Dereham and meet growing demand for specialist places. The previous building had reached the end of its life and could no longer support modern accessibility, teaching or therapeutic needs.

Designed for 224 pupils aged 4–18, the new school provides a purpose-built, inclusive environment that supports a wide range of complex needs, enabling pupils to thrive academically, socially and emotionally. The ambition extended beyond replacement, using thoughtful design and stakeholder engagement to improve long-term educational outcomes.

The scheme increases capacity, enhances safety and wellbeing, and supports greater independence and life skills, while reducing reliance on costly external placements. A focus on whole-life value has delivered a durable, energy-efficient and adaptable building with a 60-year lifespan.

By prioritising long-term flexibility, operational efficiency and social impact, the project demonstrates how investment in specialist education can deliver lasting value for pupils, families and the wider Norfolk community.

CLIENT: Children's Services, Norfolk County Council

ORGANISATIONS TO BE CREDITED: R G Carter,
Norfolk County Council's Children's Services



harrison group

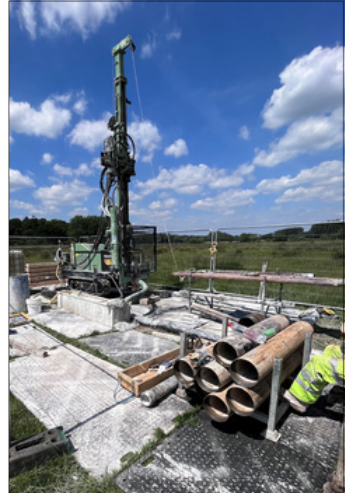
Harrison Group is a technically strong, responsive and capable ground

investigation partner, working to reduce risk in the ground for construction clients, and adding value with practical, economic solutions.



With almost 50 years of experience, **Harrison Group** offers a comprehensive range of site, testing and analytical services, which include:-

- Desk studies
- Geotechnical investigation & assessments including foundation options, settlement, heave potential and slope stability
- Contaminated land investigation, assessment, remediation strategies & verification
- Soil, groundwater and surface water sampling
- Ground gas and soil vapour monitoring
- In-situ testing, borehole drilling and pile pull-out testing
- UKAS accredited geotechnical and chemical laboratory analysis



Harrison Group would like to congratulate all the award winners, and thank you for your valuable contribution to Norfolk's vibrant construction industry.

www.harrisongroupuk.com

info@harrisongroupuk.com



Awards Entries

Infrastructure

Greyfriars Project Management | Great Yarmouth Operations and Maintenance Hub



A once disused stretch of quayside is being transformed into a major renewable energy asset for the East of England. This £24.8 million scheme will convert the southern tip of Great Yarmouth's South Denes into an Operations & Maintenance Hub, creating a key shore-side base for Southern North Sea wind farms and supporting long-term economic growth and coastal regeneration.

Phase 1, completed in early 2026, included demolition and site clearance, refurbishment of 240m of river quay, a new sheet-pile quay wall and installation of a Crew Transfer Vessel pontoon. The works were carefully coordinated with the Marine Management Organisation and harbour master within a live operational environment.

Delivered through collaboration between Norfolk County Council, New Anglia LEP and Great Yarmouth Borough Council, the project strengthens the town's role as a leading energy hub. On completion, it is expected to support around 650 jobs and reinforce the region's renewable energy sector.

CLIENT:

Norfolk County Council

ORGANISATIONS TO BE CREDITED:

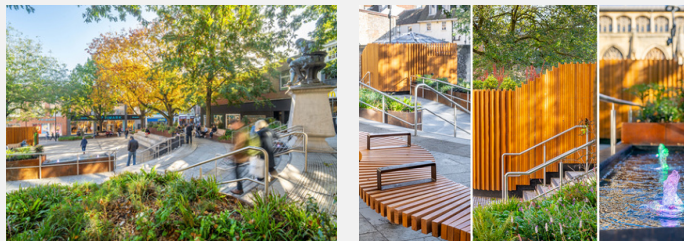
Great Yarmouth Borough Council, WSP, Tilbury Douglas



Awards Entries

Infrastructure

Ingleton Wood | Hay Hill, Norwich City Council



Hay Hill is a transformed public space in the heart of Norwich, between Gentleman's Walk and St Peter Mancroft Church. Previously underused and inaccessible, the area suffered from poor materials, antisocial behaviour and a lack of amenity. The redesign has reimagined it as an inclusive, vibrant and green civic destination that enhances wellbeing and supports the city's cultural and economic vitality.

Shaped by extensive consultation, the scheme introduces fully accessible routes, generous seating across terraced levels, and improved permeability with spaces for gathering and events. Mature trees have been retained and enhanced with biodiverse planting, alongside a cascading water feature using recycled water to create a strong sense of place.

Heritage is woven throughout, with features referencing Thomas Browne and high-quality materials including bespoke stonework, timber structures and Corten planters. Since reopening in 2024, Hay Hill has seen a significant increase in use, demonstrating its success as a welcoming and valued public space.

CLIENT:

Norwich City Council

ORGANISATIONS TO BE CREDITED:

Norwich City Council Landscape Design team,
Greyfriars Project Management, Tarmac Construction



Proud sponsor of Norfolk Constructing Excellence Awards

Birketts is a full-service, UK Top50 law firm. With a heritage spanning 160 years, we have more than 700 lawyers and legal professionals based in seven offices in the UK.

Discover an approach to law that's more progressive, more proactive and more pragmatic. We'll help you to reach the next level.

birketts.co.uk

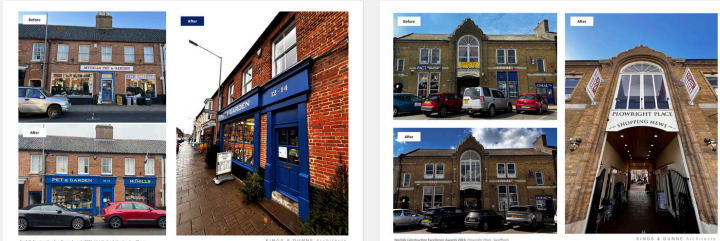
Bristol | Cambridge | Chelmsford | Ipswich
London | Norwich | Sevenoaks

 **birketts**
Next Level Law

Awards Entries

Regeneration & Retrofit

Kings & Dunne | Heritage-Led Regeneration of Swaffham Town Centre



The Heritage-Led Regeneration of Swaffham Town Centre focused on restoring historic buildings and shopfronts around the Market Place, improving the condition, character and long-term viability of the high street. Delivered through a £474,000 grant programme as part of the High Street Heritage Action Zone (HSHAZ) and Partnership Scheme in Conservation Areas (PSiCA), led by Breckland Council with support from Historic England and the National Lottery Heritage Fund, Kings & Dunne Architects worked closely with property owners, tenants and local contractors to deliver a series of repair and conservation works.

The project included structural repairs, reinstatement of traditional shopfronts, conservation of historic fabric and sensitive retrofit measures to support modern business use while enhancing the town centre's appearance.

Overall, the scheme demonstrates how targeted investment, strong collaboration and thoughtful conservation can revitalise historic town centres, supporting local businesses while safeguarding architectural character for the future.

CLIENT:

Breckland Council

ORGANISATIONS TO BE CREDITED:

Greystone Mason Ltd, NCL Contractors Ltd,
 Cliveden Conservation, GF Atthowe

Awards Entries

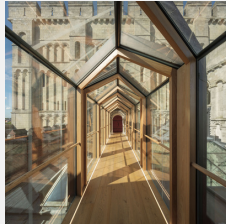
Regeneration & Retrofit and Building Project of the Year

Sponsored by:

birketts
Next Level Law

VANTAGE
SOLUTIONS

Feilden + Mawson | Norwich Castle: Royal Palace Reborn



Norwich Castle: Royal Palace Reborn is a major refurbishment of a Grade I Listed Norman keep, principally aiming to re-establish the original layout.

The basis for the recreated historic elements was rooted in rigorous academic literature, review and various types of archaeological evidence, conjecture and debate; these elements were thus almost pre-determined – and it was in the detailing, selection of materials and overall combination of elements where things came together. The modern interventions, of which there are many including the new bridge and lifts for access, stairs, foyer and numerous other functional elements, aimed to be in keeping in terms of feel and colour palette – but quite clearly simple and contemporary, to ensure they were readable as new interventions against the historic fabric (which should clearly be allowed to speak for itself). This allowed utilisation of a broad range of specialist fabricators and craftsmen to mix traditional and modern skills – and show them all at their best.

CLIENT:

Norfolk Museums Service

ORGANISATIONS TO BE CREDITED:

Conisbee, Morgan Sindall, SWECO, Artelia

Feilden+Mawson

Awards Entries

Regeneration & Retrofit and Building Project of the Year

Sponsored by:

birketts
Next Level Law

VANTAGE
CONSTRUCTION

Morgan Sindall & Chaplin Farrant | Great Yarmouth Learning Hub - The Place



The Place is the transformation of the former Palmers department store in the heart of Great Yarmouth into a modern learning hub, public library and community destination. Built in 1837 and long a local landmark, the building had become vacant and underused. This project has brought it back into meaningful public use, creating a welcoming and inclusive space that supports education and town-centre regeneration.

The 5,400m², five storey building now brings together library services, adult learning, a registry office, community services and a University Learning Centre offering a range of higher education opportunities. The scheme retains and celebrates the building's heritage while addressing structural and servicing challenges to make it fit for the future.

The project combines heritage-led regeneration with strong performance outcomes and collaborative delivery, including an A-rated EPC, significantly increased library usage and substantial local social value. The result is the creative reuse of a much-loved landmark, restoring vitality to the high street and creating a place for people to learn, connect and progress.

CLIENT:

Great Yarmouth Borough Council

PROJECT TEAM:

Fusion Project Management, SWECO, Norwich Electrical

**MORGAN
SINDALL**
CONSTRUCTION

CF
Chaplin
Farrant
Architects, Engineers
and Cost Consultants

Awards Entries

Regeneration & Retrofit

Sponsored by:

birketts
Next Level Law

Paul Robinson Partnership | The Viking Centre



Once a former pub and Indian restaurant that had fallen vacant has been transformed into a vibrant, sustainable community hub for Sprowston. Funded entirely through Community Infrastructure Levy (CIL), the £2 million project combines refurbishment, a rear extension and sensitive conversion, respecting the building's heritage while meeting modern community needs.

A fabric-first approach, supported by photovoltaic panels and electric vehicle charging, underpins the project's sustainability. The new extension adds nearly 2,000ft² of space while remaining largely hidden from the street, preserving the historic façade.

The extension provides a flexible community hall with supporting facilities, while the original building offers function rooms and office space for local groups and businesses. At its heart is Longboats and Lattes, a welcoming café and social hub, alongside a community upcycling shop promoting reuse.

Now known as The Viking Centre, the project has successfully regenerated a derelict building into a thriving destination for community connection, enterprise and sustainability.

CLIENT:

Sprowston Town Council

ORGANISATIONS TO BE CREDITED:

Bidwells, Draper & Nicholls

Awards Entries

Regeneration & Retrofit

Purcell Architecture Ltd | The Halls



The Halls is the transformation of a Grade I listed monastic complex into a fully accessible cultural venue in the heart of Norwich. Home to concerts, civic events and the Norwich Beer Festival, the project reimagines St Andrew's Hall and Blackfriars Hall for modern audiences while safeguarding their heritage significance, supported by Norwich City Council, the Towns Fund and Arts Council England.

Working within both listed and Scheduled Monument constraints, the scheme involved close collaboration with Historic England and conservation officers. A strategy of repair and retention guided the conservation of historic fabric, including masonry, windows and roofs, securing the building's long-term resilience.

A key achievement is the improved accessibility, resolving level changes through a new lift and integrated ramps, alongside upgraded facilities throughout. Enhancements such as a new bar and improved AV systems support a better visitor experience.

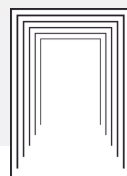
The project demonstrates how sensitive design can conserve heritage while revitalising a landmark venue for future generations.

CLIENT:

Norwich City Council

ORGANISATIONS TO BE CREDITED:

Qoda Consulting, ND Willan, Rossi Long, Wright Consulting



PURCELL

Awards Entries

Regeneration & Retrofit

R G Carter | R G Carter Building 50



This refurbishment and new-build project transformed a constrained 2,000m², two storey research facility (Building 50) at the John Innes Centre, alongside a new link building. Works involved complex demolition, strip-out and reinstatement within a live environment at a leading plant science and genetics research centre.

The scheme delivered highly specialised spaces including controlled environment rooms, microbiological laboratories, -20°C cold storage, DSEAR-compliant threshing rooms, a genotyping suite and a world-class seed store. Careful planning and close collaboration ensured construction progressed without disrupting ongoing research.

Sustainability was a key focus, with cross-laminated timber and timber stud partitions replacing more carbon-intensive materials, supporting the client's net zero ambitions. High-performance detailing achieved an EPC A rating, while advanced BMS controls and user training enable efficient long-term operation, aligning with the centre's vision of "Healthy Plants, Healthy People, Healthy Planet."

CLIENT: John Innes Centre

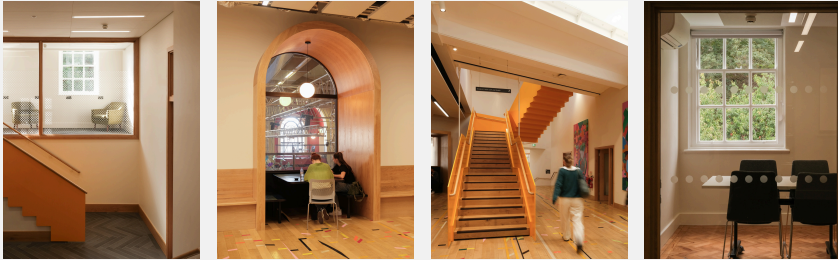
ORGANISATIONS TO BE CREDITED: MSW Architects, Rossi Long



Awards Entries

Regeneration & Retrofit

Hudson Architects | 20 Bank Plain Student Centre



The transformation of 20 Bank Plain reimagines a Grade II listed former bank in Norwich as a hub for student life, learning and support at Norwich University of the Arts. Through careful retrofit and adaptive reuse, Hudson Architects have created a flexible space that supports the university's growth while preserving the building's character and embodied carbon.

The scheme uses light-touch, strategic interventions to refurbish former nightclub, gym, workshop and canteen areas into a student union hub, teaching spaces, support facilities and offices. Two interconnected spaces form the heart of the building: a lower-level canteen and a flexible social, study and events space above.

A sculptural staircase animates the central atrium, while new openings and an accessible entrance improve circulation and openness, with level access throughout.

Overall, the project demonstrates how heritage buildings can be adapted for modern use through thoughtful, low-impact design focused on reuse and sustainability.

CLIENT:

Norwich University of the Arts

ORGANISATIONS TO BE CREDITED:

NCL Contractors, Conisbee, Hoare Lea, Real Consulting, iM2,
 OFR Consultants, Rowenna Malone

HUDSONArchitects

Awards Entries

Regeneration & Retrofit and Residential Project of the Year

Sponsored by:

birketts
Next Level Law

FOAN
CONSTRUCTION

Studio 163 | Blue House



This deep retrofit of a house on the North Norfolk coast reconfigures a building once used as the village butcher's shop. The clients sought to modernise their holiday home, which was quickly recognised as a locally significant place with strong connections to its setting, overlooking the staithe and surrounding tidal marshland. Historically combined with its adjoining terrace, the building is now known as Prospect House.

The project involved a comprehensive retrofit, retaining the existing shell while reworking almost all internal elements to better suit contemporary use. The design responds to the needs of a large, flexible household, accommodating extended family and visitors throughout the year. Key interventions included the introduction of a dormitory space for children, improved internal circulation, and a reorientation of the house to the north to maximise views towards the coast.

CLIENT: Private Clients

ORGANISATIONS TO BE CREDITED: King & Company, Hainstone, Design Secure

163



Your Partner *in* Building Safety & Compliance

Vantage Building Control Ltd was founded by Tony Harvey-Soanes, and we are a Registered Building Control Approver (RBCA) with the Building Safety Regulator.

Vantage Building Safety was established to expand our specialist expertise following the Building Safety Act.

Our Services Include:

- **Building Control**
- **Building Regulations Principal Designer (BRPD)**
- **CDM Principal Designer Services**
- **CDM Advisor Services**

*Supporting Your Projects from Design to **Completion***

Providing expert guidance, managing risk and ensuring **safe, compliant** outcomes.

www.vantagebuildingcontrol.com | www.vantagebuildingsafety.com

admin@vantagebuildingcontrol.com | tony@vantageuk.com

Awards Entries

Building Project of the Year

R G Carter Ltd | Fred Nicholson SEN School



Fred Nicholson is a purpose-built 224-pupil SEND school delivered for Norfolk County Council, supporting the relocation and expansion of specialist provision in Dereham. Replacing an outdated, over-capacity facility, the project was completed over 72 weeks through strong collaboration between client, design team and supply chain.

Designed to Department for Education standards, the school provides 17 classrooms, specialist teaching spaces, ASD provision, sensory and therapy rooms, and extensive indoor and outdoor facilities. A focus on whole-life value ensures durability, adaptability and long-term performance.

Sustainability is embedded through passive design, all-electric systems, PV panels, and landscape strategies for drainage and biodiversity. Construction prioritised local labour, waste reduction and efficient resource use. Digital tools, BIM coordination and clear KPIs supported delivery, alongside rigorous safety and Building Safety Act compliance.

Strong social value included student engagement, site visits and community initiatives. The result is an inclusive, high-quality environment supporting education, wellbeing and long-term community benefit.

CLIENT: Norfolk County Council

ORGANISATIONS TO BE CREDITED:
Norse Consulting

CARTER

Awards Entries

Residential Project of the Year & Building Project of the Year

Broadland Housing Association - Purdy Street, Salthouse



This project delivers the sensitive redevelopment of a former flint quarry on the edge of Salthouse, North Norfolk, providing affordable homes for local people through a Local Lettings Policy. Developed over twelve years in partnership with North Norfolk District and Parish Councils, it responds carefully to its highly protected setting.

The design works with the site's natural topography, using local materials and a site-specific layout to reflect the village's character. One and two storey brick and flint homes are arranged around a central courtyard with shared amenity and parking, enclosed by boundary walls that echo local agricultural forms.

Built using Modern Methods of Construction and designed to Passivhaus principles, the homes achieve high levels of thermal performance and energy efficiency. A timber frame system ensures airtightness, complemented by high-quality traditional brick and flint craftsmanship, creating a sustainable development rooted in its context.

CLIENT: Broadland Housing Association

ORGANISATIONS TO BE CREDITED: Ingleton Wood LLP, Smith of Honingham, Rossi Long Consulting, CJ Yardley Landscape Survey Design and Management, iM2 Ltd, One Planning Ltd, AECOM, DGL Quality Management Ltd



Awards Entries

Building Project of the Year

Morgan Sindall | Norfolk Community Diagnostics Centres



The Norfolk & Norwich University Hospital (NNUH) Community Diagnostic Centre (CDC) is a landmark healthcare project showcasing how collaboration, innovation and sustainability can transform regional infrastructure. Delivered by Morgan Sindall Construction for Norfolk & Norwich University Hospitals NHS Foundation Trust, the £25m facility expands diagnostic capacity across Norfolk while setting standards for low-carbon construction, digital delivery and social value.

Located at Norwich Research Park beside the Quadram Institute, the 40,000 sq ft centre includes five MRI scanners, four CT scanners, two X-ray rooms and two ultrasound suites. Designed to enable faster diagnosis of conditions such as lung, prostate and colorectal cancers, it reduces pressure on the main hospital and improves regional access.

Operating seven days a week, it can treat up to 430 patients daily, providing around 150,000 appointments annually, cutting waiting times and supporting earlier diagnosis across Norfolk and Waveney, while enhancing patient experience and long-term healthcare system resilience.

CLIENT: NNUH Trust, Major Projects

ORGANISATIONS TO BE CREDITED: RIDGE, WSP,
Indy Bhogal (NBBJ) - Architect, Lexica, MEP Design, Rossi Long Consultants,
Munro Services

Offers
available to
**help you
move!**

**Building
exceptional new
homes** across
the region

Energy-efficient new homes in idyllic locations

With developments located across the county, you'll find homes for young professionals, growing families and those looking to rightsize. From modern starter homes to stylish family properties - through to bungalows exclusively for over 55's - we've the perfect new home to suit you.

Find out more -
visit our website today.

newhomes.lovell.co.uk

**LOVELL
HOMES**


**LAVENDER
CHASE**
Hunstanton

An exquisite collection of
2, 3 & 4 bedroom homes
in Hunstanton

T: 01485 370 136


**PARK
VIEW**
Holt

An elegant collection of
2, 3 & 4 bedroom
homes in Holt

T: 01263 200 289


BRIARSWOOD
Harleston

A stylish collection of
2, 3 & 4 bedroom
homes in Harleston

T: 01379 398 165

Agenda & Menu



6:00pm	■	Arrival and networking
6:00pm	■	Reception Drinks
6:45pm	■	Take your seats
7:00pm	■	Welcome from Tim Boucher, Chair
7:15pm	■	Heads & Tails - in support of Nelson's Journey
7:30pm	■	Dinner is served
9:30pm	■	Awards presentation
11:30pm	■	Carriages

MENU

STARTER

- Chicken & ham hock terrine
- Vegetarian/vegan option - ordered by request

MAIN

- Sirloin of Beef with fondant potato, garlic roasted broccoli, braised red cabbage, red wine sauce (gf)
- Vegetarian/vegan option - ordered by request

DESSERT

- Stick Toffee Pudding
 - Vegetarian/Vegan option - ordered by request
-

Thank You



We would like to extend our sincere thanks to everyone who has contributed to making the NCE 2026 Awards such a success.

To our guests, thank you for joining us and for helping to create such a fantastic atmosphere on the night. To all of our nominees and winners, congratulations and thank you for showcasing the very best of the industry, your achievements are what make these awards so special.

We are especially grateful to our judges for generously giving their time, expertise and careful consideration throughout the judging process. Our thanks also go to our sponsors, whose continued support and commitment are invaluable in making this event possible.

We would also like to thank our compère, Rob Setchell, for guiding us through the evening, along with all of our suppliers and partners whose professionalism and dedication ensure the event runs seamlessly.

Finally, we extend our thanks to our wonderful venue, Royal Norwich and their team for their support and hospitality.

NCE Committee



Constructing Excellence
Norfolk Club

Our Mission |
“Positively disrupting the
industry delivery processes to
transform performance.”

[Contact Us](#)

www.norfolkconstructingexcellence.com

admin@norfolkconstructingexcellence.com